



Wootton Street, Bedworth, CV12 9DX

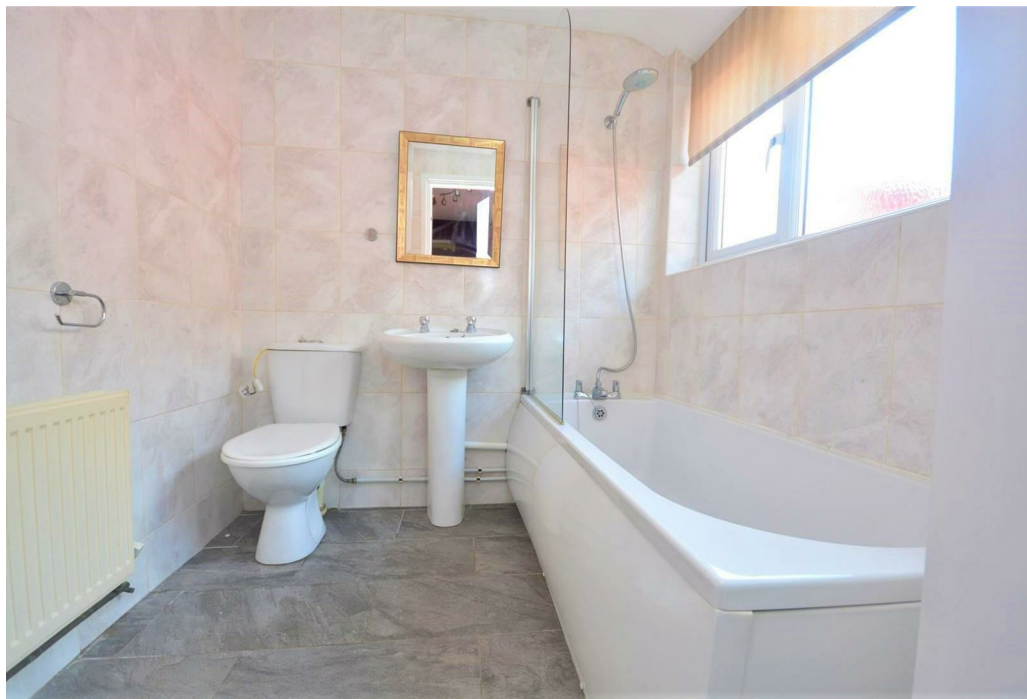
**SHELDON
BOSLEY
KNIGHT**

LAND AND
PROPERTY
PROFESSIONALS

Property Description

*** DEPOSIT ALTERNATIVE AVAILABLE
*** AVAILABLE NOW *** A well-presented traditional terraced property located in a well-established residential location just off the Bulkington Road in Bedworth. The accommodation briefly comprises of; Lounge, dining room, fitted kitchen, ground floor bathroom and two double bedrooms to the first floor, with double glazing and gas central heating throughout and a large rear garden. The property is sure to be in high demand so call now on 02476374949 to book your viewing slot.







Key Features

- DEPOSIT ALTERNATIVE AVAILABLE
- Available immediately
- Sought after location
- Fitted kitchen
- Two reception rooms
- Two double bedroom
- Large rear garden
- Council Tax: A EPC; D

£825 PCM